

# The Regatta at Yaquina Bay

A NEW APPROACH TO LUXURY COASTAL PROPERTY

WWW.REGATTA-CONDOS.COM

Unit	Square Feet	Price
Flagship #6	1801	\$675,000
Clipper #7	1845	\$675,000
Windjammer #8	2007	\$700,000
Mizzen #9	2007	\$700,000
Galleon #10	2007	\$700,000
Windward #1	1801	\$607,500
Sloop #2	1845	\$607,500
Cutter #3	2007	\$630,000
Schooner #4	2007	\$630,000
Genoa #5	2007	\$630,000

For more information contact:

Dean Failor ABR,GRI,SRES  
Principal Broker/Owner

[www.deanfailor.com](http://www.deanfailor.com)

Office 541-563-3862  
Cellular 541-270-3304



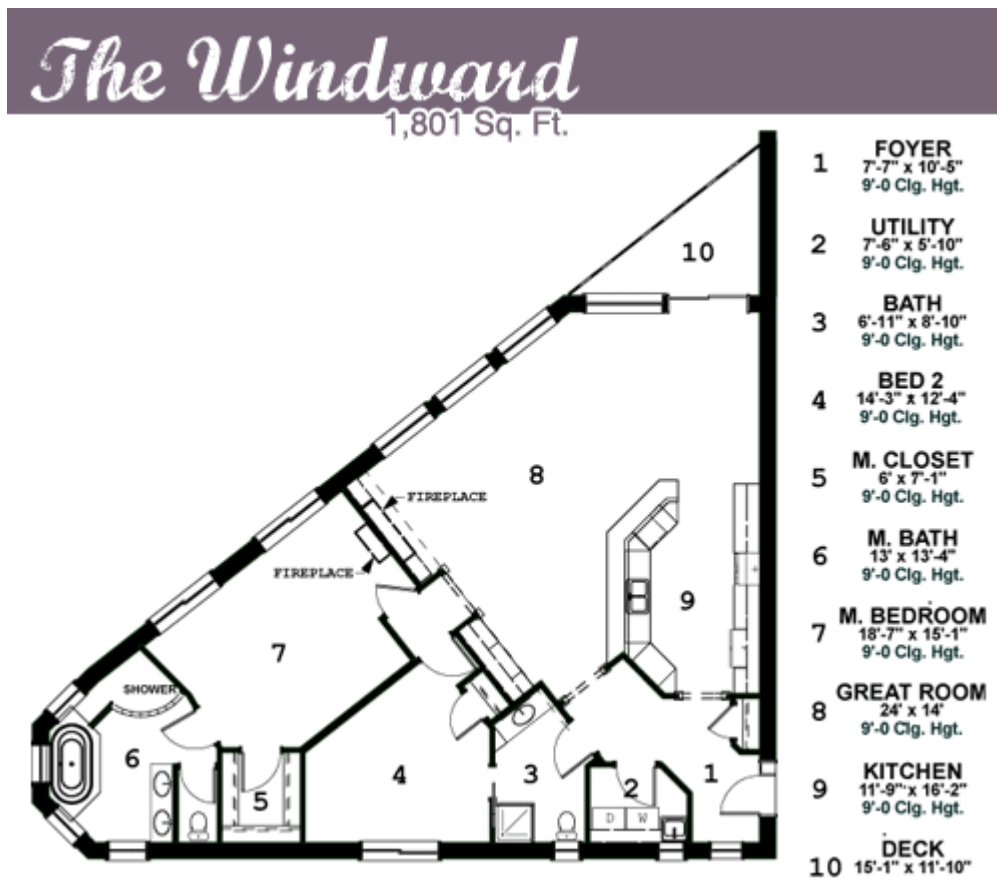
**Windermere WCP Real Estate Gallery**  
541.563.3862 or 541.270.3304 dean@newportnet.com

# The Regatta at Yaquina Bay

A NEW APPROACH TO LUXURY COASTAL PROPERTY

WWW.REGATTA-CONDOS.COM

## First Floor



Windermere Premier  
PROPERTIES

Windermere WCP Real Estate Gallery  
541.563.3862 or 541.270.3304 dean@newportnet.com

# The Regatta at Yaquina Bay

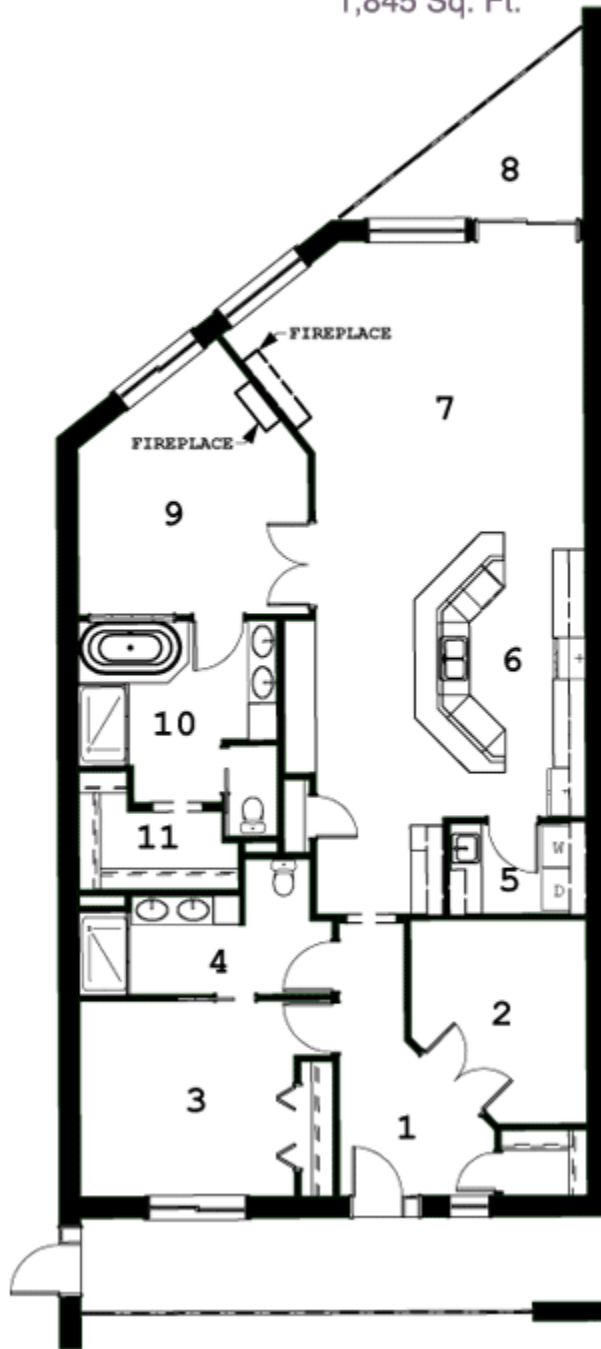
A NEW APPROACH TO LUXURY COASTAL PROPERTY

WWW.REGATTA-CONDOS.COM

## First Floor

### The Sloop

1,845 Sq. Ft.



- 1 **FOYER**  
9'-6" x 8'-7"  
9'-0 Clg. Hgt.
- 2 **OFFICE**  
10'-8" x 12'-4"  
9'-0 Clg. Hgt.
- 3 **BEDROOM 2**  
13' x 11'-10"  
9'-0 Clg. Hgt.
- 4 **BATH**  
14' x 6'  
9'-0 Clg. Hgt.
- 5 **UTILITY**  
8'-3" x 5'-5"
- 6 **KITCHEN**  
10'-4" x 16'-2"  
9'-0 Clg. Hgt.
- 7 **GREAT ROOM**  
16'-5" x 18'-9"  
9'-0 Clg. Hgt.
- 8 **DECK**  
15'-3" x 12'
- 9 **M. BEDROOM**  
14'-1" x 16'-9"  
9'-0 Clg. Hgt.
- 10 **M. BATH**  
12' x 11'  
8'-0 Clg. Hgt.
- 11 **M. CLOSET**  
10'-8" x 4'-9"  
8'-0 Clg. Hgt.



Windermere WCP Real Estate Gallery  
 541.563.3862 or 541.270.3304 dean@newportnet.com

# The Regatta at Yaquina Bay

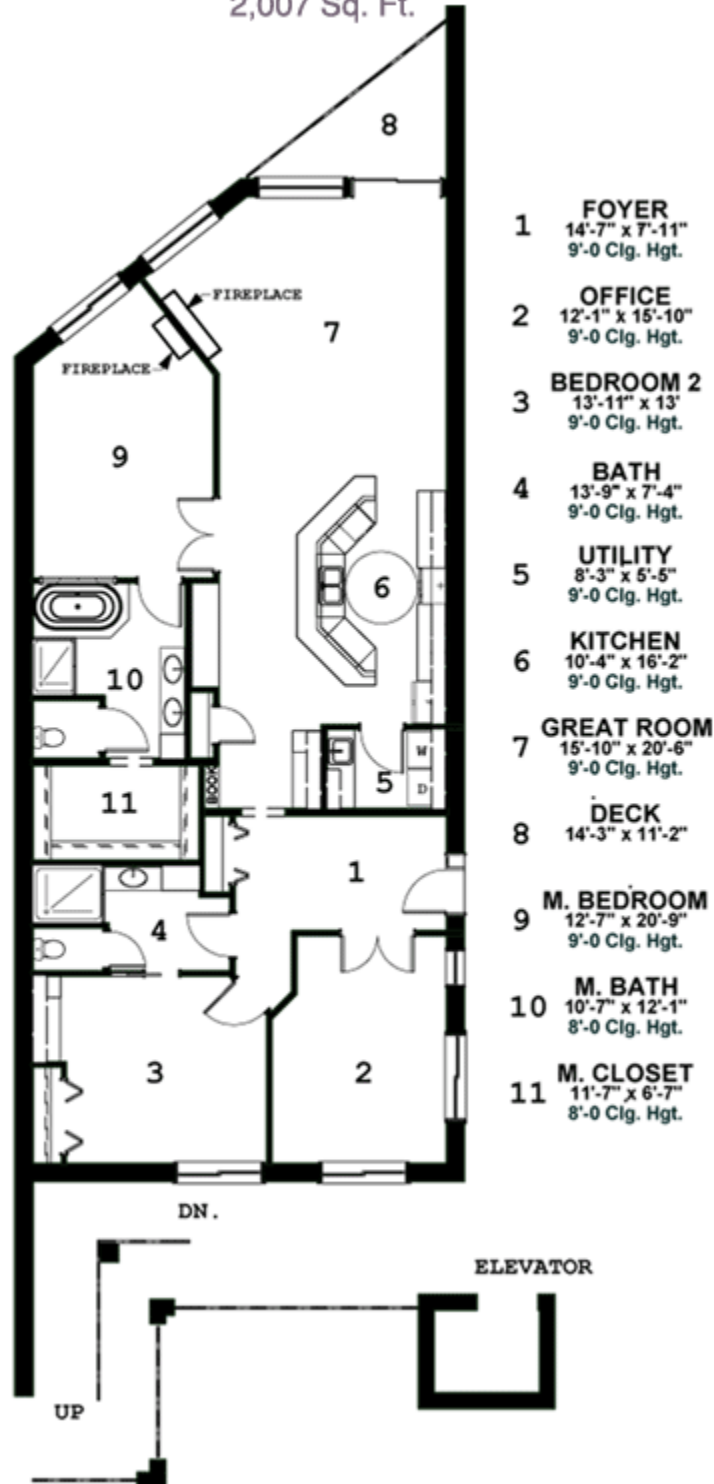
A NEW APPROACH TO LUXURY COASTAL PROPERTY

WWW.REGATTA-CONDOS.COM

## First Floor

### The Cutter

2,007 Sq. Ft.



- 1 **FOYER**  
14'-7" x 7'-11"  
9'-0 Clg. Hgt.
- 2 **OFFICE**  
12'-1" x 15'-10"  
9'-0 Clg. Hgt.
- 3 **BEDROOM 2**  
13'-11" x 13'  
9'-0 Clg. Hgt.
- 4 **BATH**  
13'-9" x 7'-4"  
9'-0 Clg. Hgt.
- 5 **UTILITY**  
8'-3" x 5'-5"  
9'-0 Clg. Hgt.
- 6 **KITCHEN**  
10'-4" x 16'-2"  
9'-0 Clg. Hgt.
- 7 **GREAT ROOM**  
15'-10" x 20'-6"  
9'-0 Clg. Hgt.
- 8 **DECK**  
14'-3" x 11'-2"
- 9 **M. BEDROOM**  
12'-7" x 20'-9"  
9'-0 Clg. Hgt.
- 10 **M. BATH**  
10'-7" x 12'-1"  
8'-0 Clg. Hgt.
- 11 **M. CLOSET**  
11'-7" x 6'-7"  
8'-0 Clg. Hgt.

Windermere Premier PROPERTIES

Windermere WCP Real Estate Gallery  
541.563.3862 or 541.270.3304 dean@newportnet.com

# The Regatta at Yaquina Bay

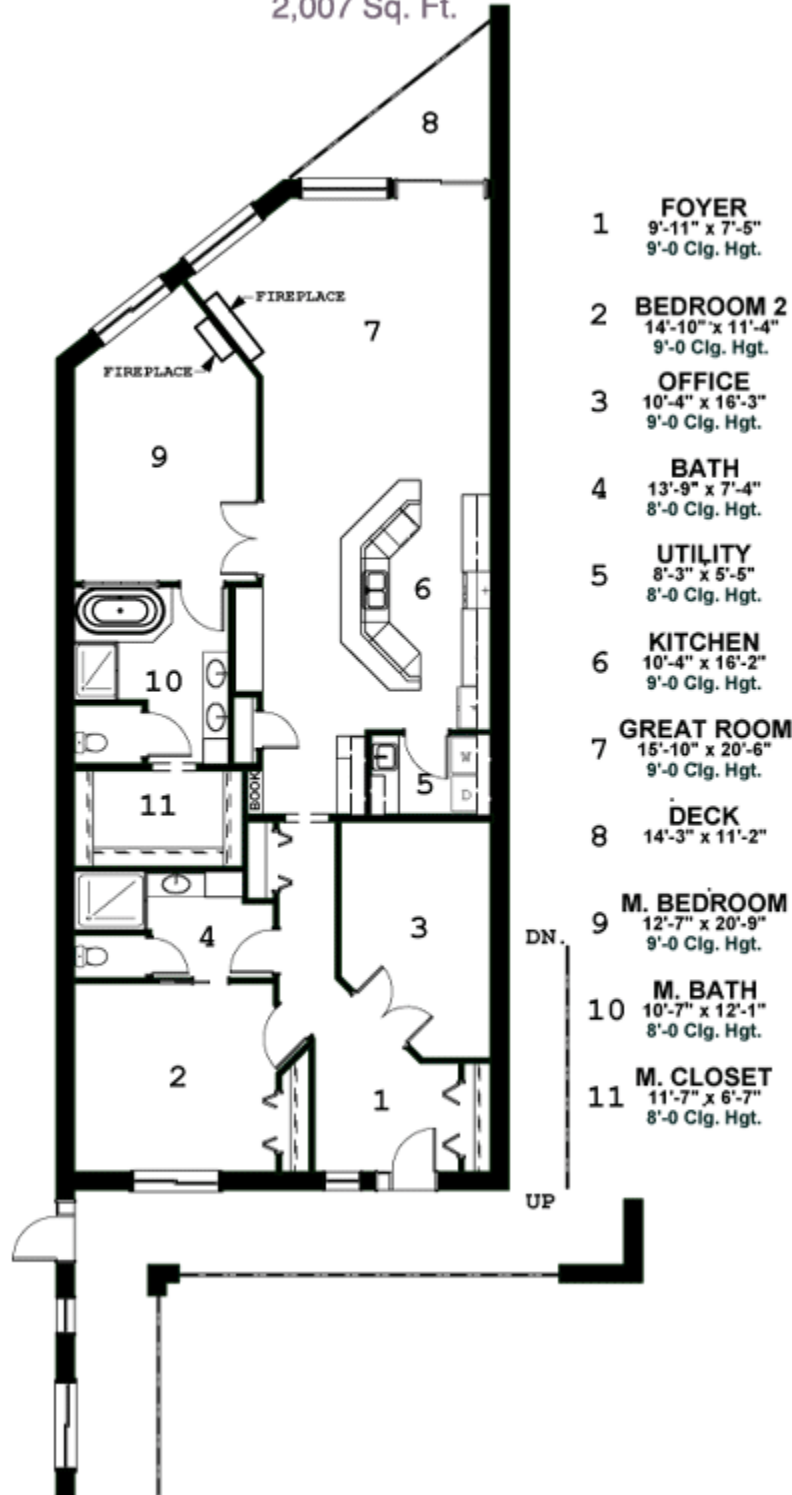
A NEW APPROACH TO LUXURY COASTAL PROPERTY

WWW.REGATTA-CONDOS.COM

## First Floor

### The Schooner

2,007 Sq. Ft.



Windermere Premier PROPERTIES

Windermere WCP Real Estate Gallery  
541.563.3862 or 541.270.3304 dean@newportnet.com

# The Regatta at Yaquina Bay

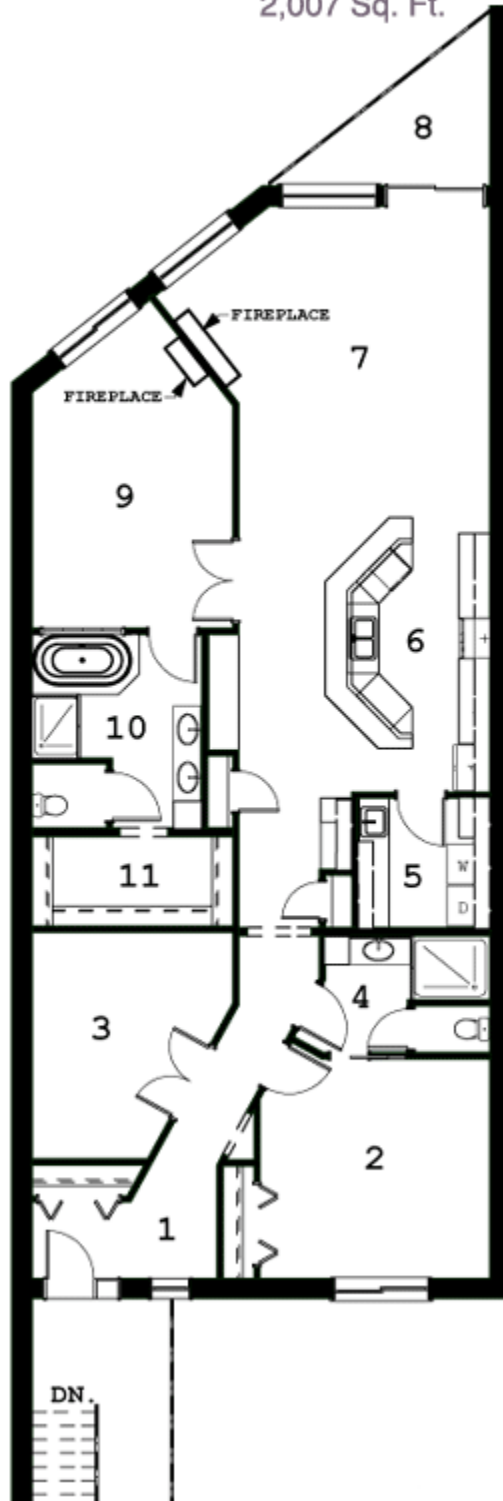
A NEW APPROACH TO LUXURY COASTAL PROPERTY

WWW.REGATTA-CONDOS.COM

## First Floor

### The Geneva

2,007 Sq. Ft.



- 1 **FOYER**  
11'-7" x 4'-10"  
9'-0" Clg. Hgt.
- 2 **BEDROOM 2**  
14'-6" x 13'-9"  
9'-0" Clg. Hgt.
- 3 **OFFICE**  
12'-7" x 14'-2"  
9'-0" Clg. Hgt.
- 4 **BATH**  
10'-6" x 7'-5"  
8'-0" Clg. Hgt.
- 5 **UTILITY**  
8'-4" x 8'-1"  
8'-0" Clg. Hgt.
- 6 **KITCHEN**  
10'-4" x 16'-2"  
9'-0" Clg. Hgt.
- 7 **GREAT ROOM**  
15'-10" x 20'-6"  
9'-0" Clg. Hgt.
- 8 **DECK**  
14'-3" x 11'-2"
- 9 **M. BEDROOM**  
12'-7" x 20'-9"  
9'-0" Clg. Hgt.
- 10 **M. BATH**  
10'-7" x 12'-1"  
8'-0" Clg. Hgt.
- 11 **M. CLOSET**  
12'-7" x 5'-7"  
8'-0" Clg. Hgt.

Windermere Premier PROPERTIES

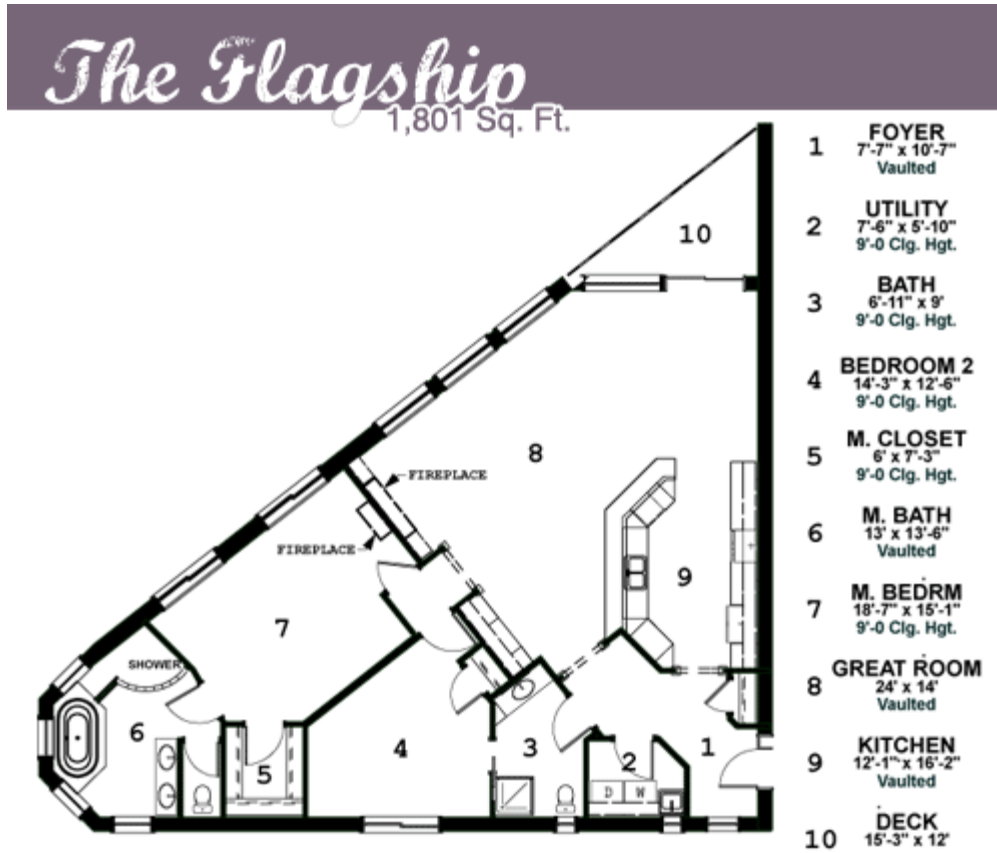
Windermere WCP Real Estate Gallery  
541.563.3862 or 541.270.3304 dean@newportnet.com

# The Regatta at Yaquina Bay

A NEW APPROACH TO LUXURY COASTAL PROPERTY

WWW.REGATTA-CONDOS.COM

## Second Floor



Windermere Premier  
PROPERTIES

Windermere WCP Real Estate Gallery  
541.563.3862 or 541.270.3304 dean@newportnet.com

# The Regatta at Yaquina Bay

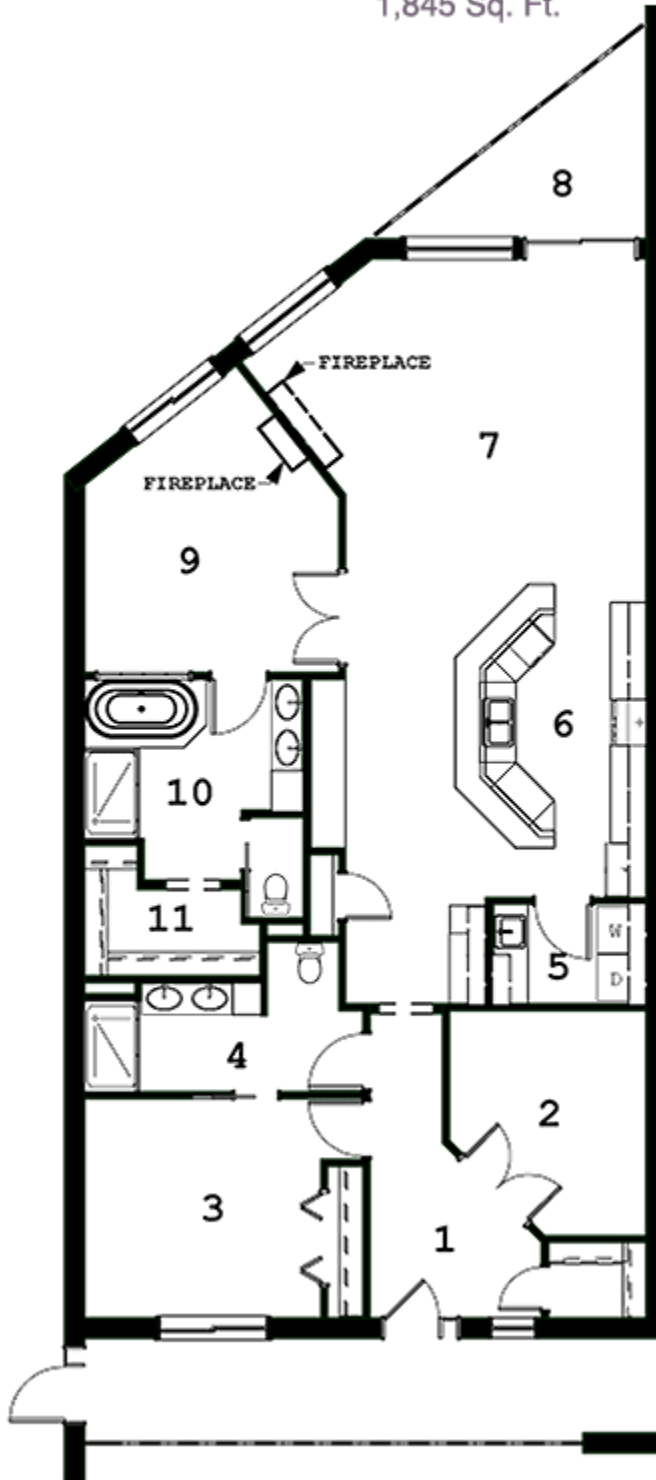
A NEW APPROACH TO LUXURY COASTAL PROPERTY

WWW.REGATTA-CONDOS.COM

## Second Floor

### The Clipper

1,845 Sq. Ft.



- 1 **FOYER**  
9'-5" x 8'-9"  
9'-0 Clg. Hgt.
- 2 **OFFICE**  
10'-10" x 12'-4"  
9'-0 Clg. Hgt.
- 3 **BEDROOM 2**  
13' x 12'  
9'-0 Clg. Hgt.
- 4 **BATH**  
14' x 5'-11"  
9'-0 Clg. Hgt.
- 5 **UTILITY**  
8'-5" x 5'-5"  
9'-0 Clg. Hgt.
- 6 **KITCHEN**  
10'-6" x 16'-2"  
Vaulted
- 7 **GREAT ROOM**  
16'-7" x 18'-11"  
Vaulted
- 8 **DECK**  
15'-5" x 12'-1"
- 9 **M. BEDROOM**  
14' x 16'-9"  
Vaulted
- 10 **M. BATH**  
12' x 11'  
8'-0 Clg. Hgt.
- 11 **M. CLOSET**  
10'-10" x 5'-3"  
8'-0 Clg. Hgt.

Windermere Premier PROPERTIES

Windermere WCP Real Estate Gallery  
541.563.3862 or 541.270.3304 dean@newportnet.com

# The Regatta at Yaquina Bay

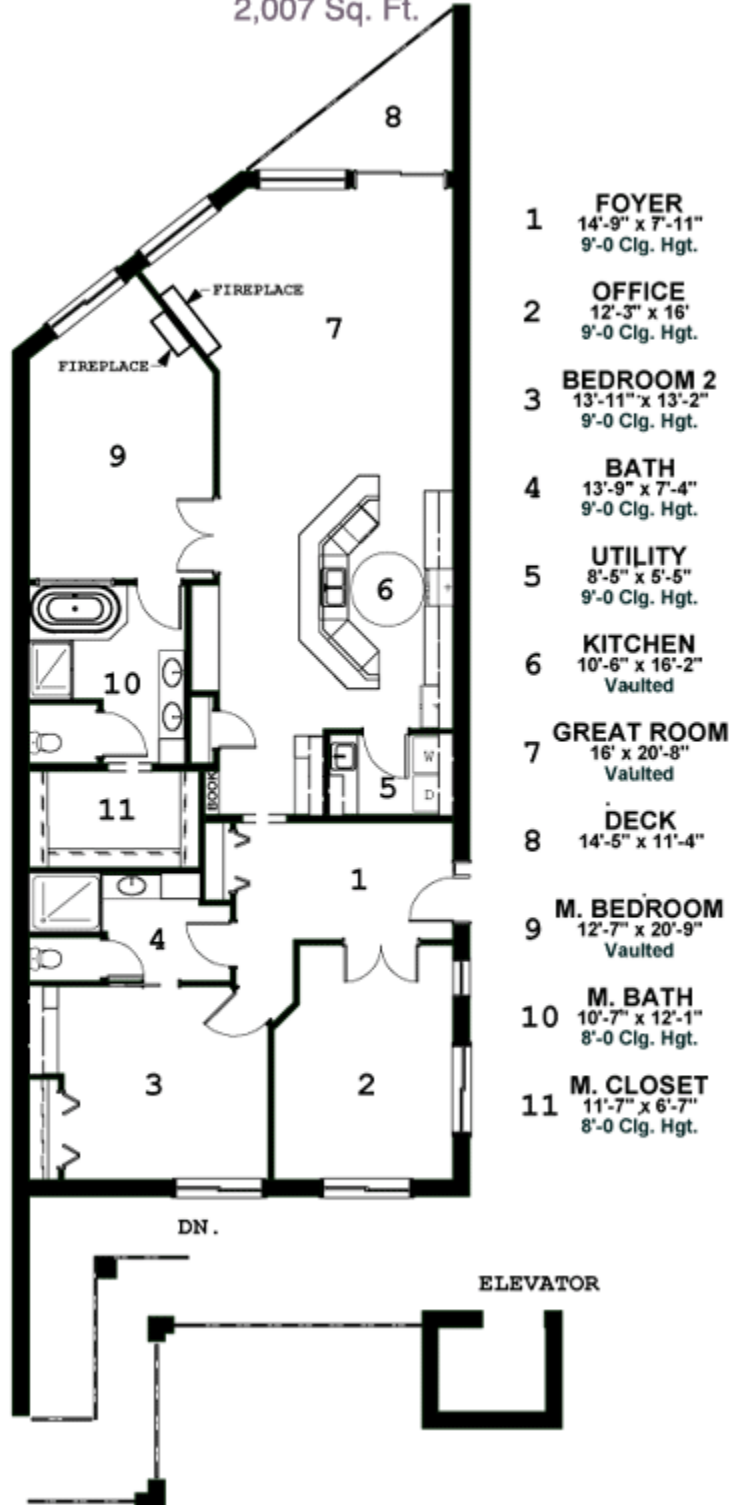
A NEW APPROACH TO LUXURY COASTAL PROPERTY

WWW.REGATTA-CONDOS.COM

## Second Floor

### *The Windjammer*

2,007 Sq. Ft.



Windermere Premier PROPERTIES

Windermere WCP Real Estate Gallery  
541.563.3862 or 541.270.3304 dean@newportnet.com

# The Regatta at Yaquina Bay

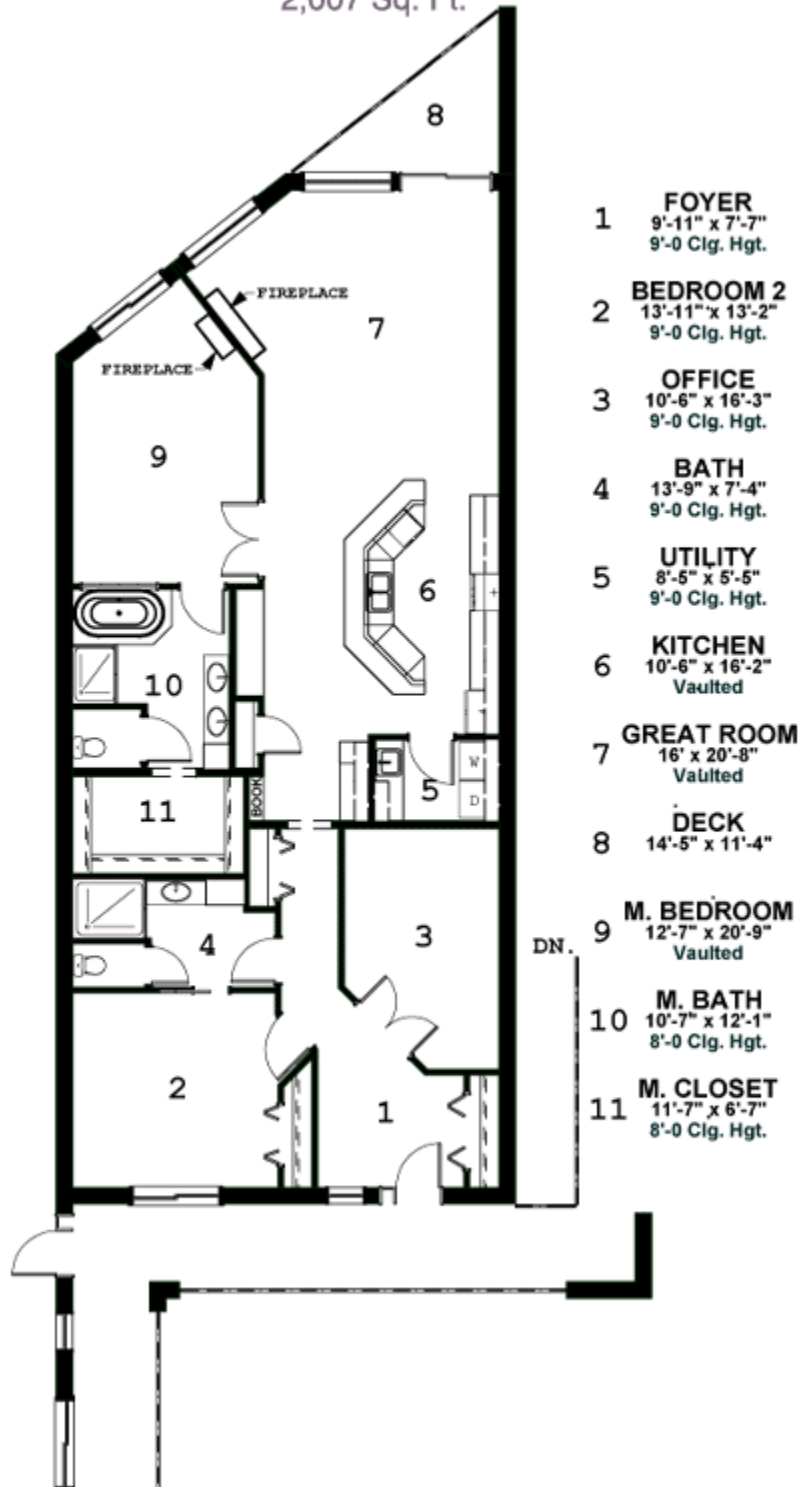
A NEW APPROACH TO LUXURY COASTAL PROPERTY

WWW.REGATTA-CONDOS.COM

## Second Floor

### The Mizzen

2,007 Sq. Ft.



Windermere Premier PROPERTIES

Windermere WCP Real Estate Gallery  
541.563.3862 or 541.270.3304 dean@newportnet.com

# The Regatta at Yaquina Bay

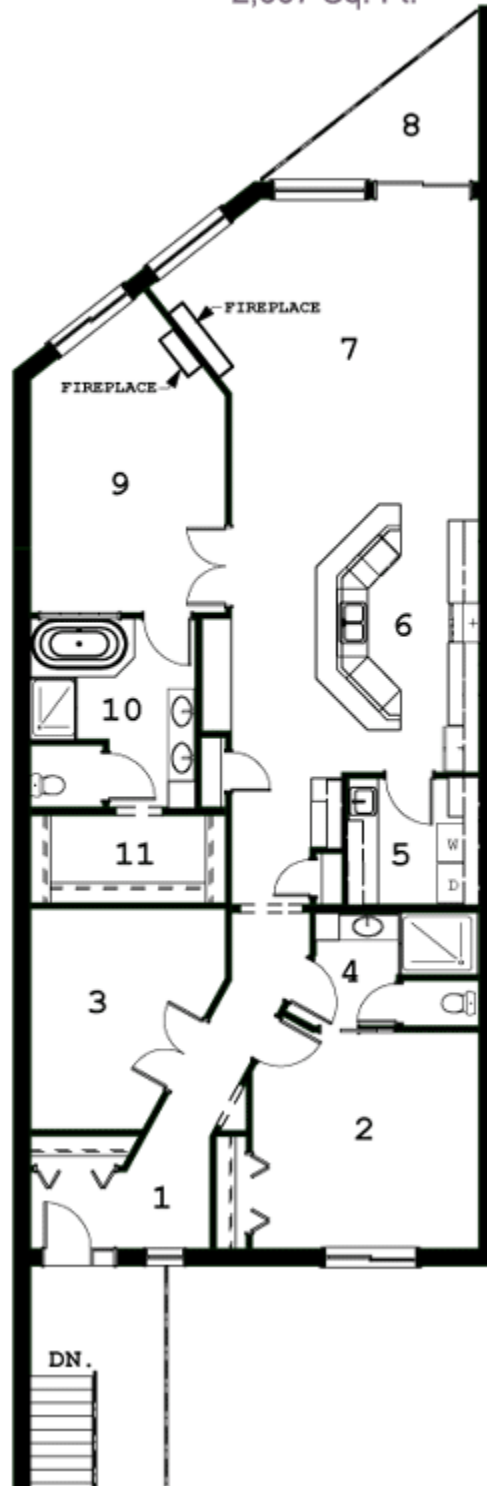
A NEW APPROACH TO LUXURY COASTAL PROPERTY

WWW.REGATTA-CONDOS.COM

## Second Floor

### The Galleon

2,007 Sq. Ft.



- 1 **FOYER**  
11'-7" x 5"  
9'-0 Clg. Hgt.
- 2 **BEDROOM 2**  
14'-7" x 13'-11"  
9'-0 Clg. Hgt.
- 3 **OFFICE**  
12'-7" x 14'-2"  
9'-0 Clg. Hgt.
- 4 **BATH.**  
10'-6" x 7'-5"  
8'-0 Clg. Hgt.
- 5 **UTILITY**  
8'-6" x 8'-1"  
8'-0 Clg. Hgt.
- 6 **KITCHEN**  
10'-6" x 16'-2"  
Vaulted
- 7 **GREAT ROOM**  
16' x 20'-8"  
Vaulted
- 8 **DECK**  
14'-5" x 11'-4"
- 9 **M. BEDROOM**  
12'-7" x 20'-9"  
Vaulted
- 10 **M. BATH**  
10'-7" x 12'-1"  
8'-0 Clg. Hgt.
- 11 **M. CLOSET**  
12'-7" x 5'-7"  
8'-0 Clg. Hgt.

Windermere Premier PROPERTIES

Windermere WCP Real Estate Gallery  
541.563.3862 or 541.270.3304 dean@newportnet.com